



## Gate Valves

Gate valves are linear motion valves in which a flat closure element slides into the flow stream to provide shut-off. Gate valves are designed to minimize pressure drop across the valve in the fully opened position and stop the flow of fluid completely.

Manufactured to API specification 6A, 19<sup>th</sup> edition, PSL 1-4 Material for H<sub>2</sub>S and CO<sub>2</sub> service in accordance with NACE MR-01-75, latest edition.

Available in API Material Classes AA through HH, Temp. Classification L through U. Other end connections, size and material classes on request.

### API 6A VALVES:

Size 1 13/16" through 6 3/8" - Pressure rating up to 15,000 PSI.

### API 6D VALVES:

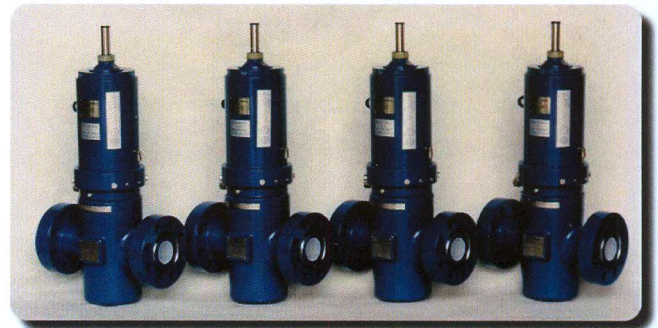
Size 2" through 6" - Class 150 through 2500

### ANSI VALVES:

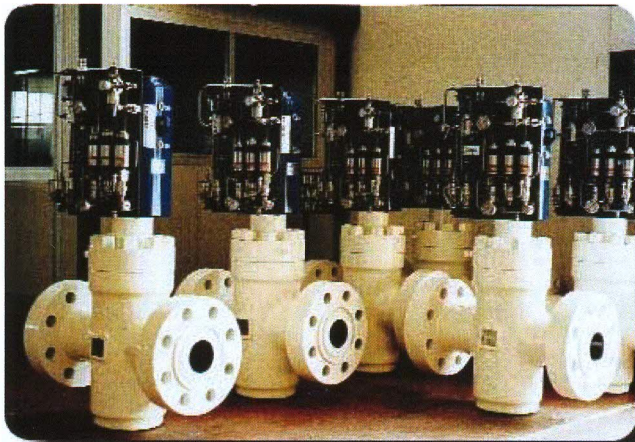
Size 1" and 1 1/2" - Class 150 through 2500



GATE VALVE 4" 600 with Pneumatic Actuator

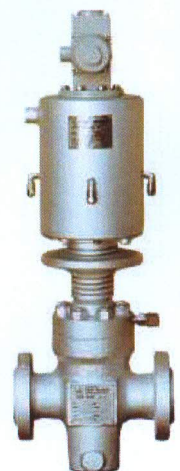


3. 1/8" 5,000 GATE VALVE with Hydraulic Actuator



6" - 2500, Line Pressure Activated, spring assisted. Middle East Production Manifolds

High Temperature Actuated Gate Valve



"PN/HT" PNEUMATIC ACTUATOR